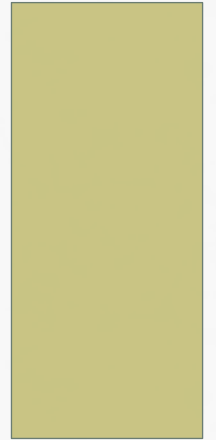


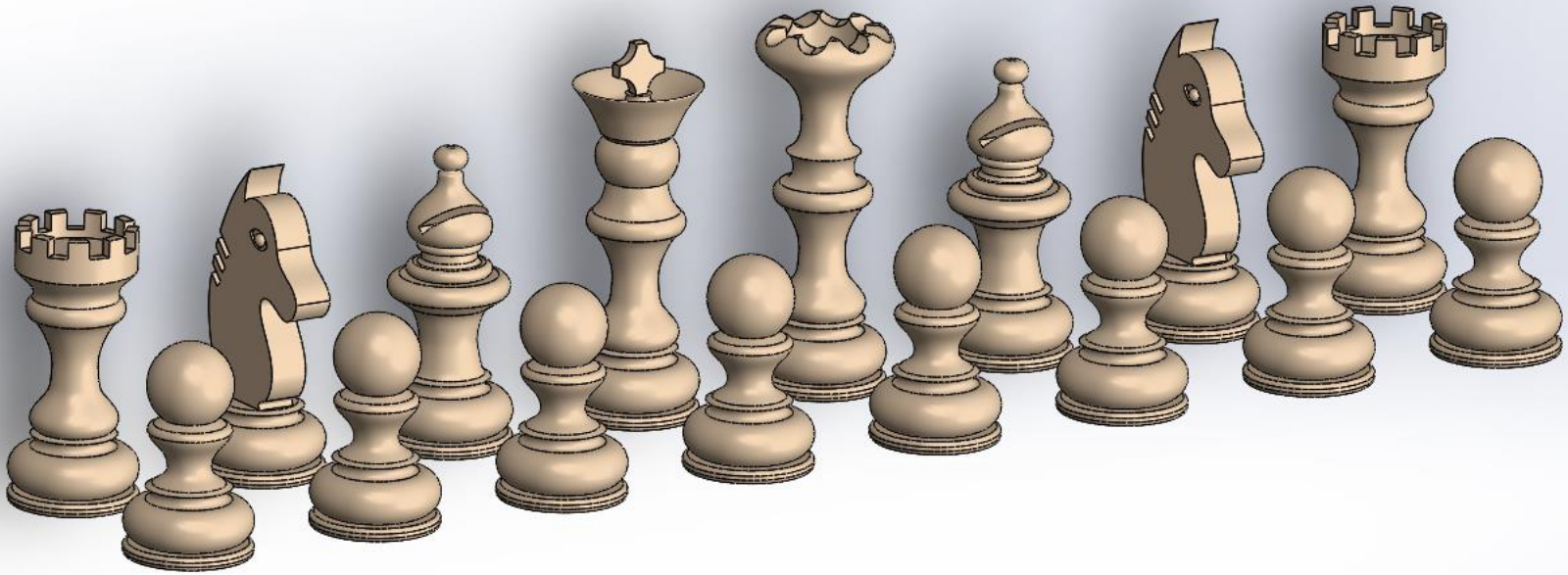
CHESS SET

PRINTING AND ASSEMBLY GUIDE



1 - PIECES PRESENTATION

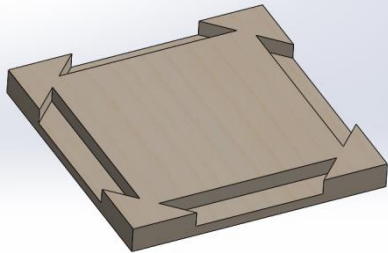
- Chess pieces :



1 - PIECES PRESENTATION

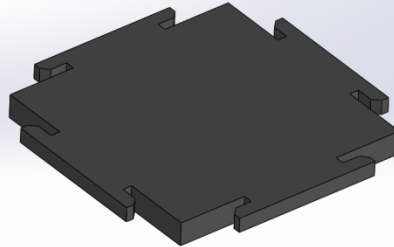
- Board pieces :

TYPE 1



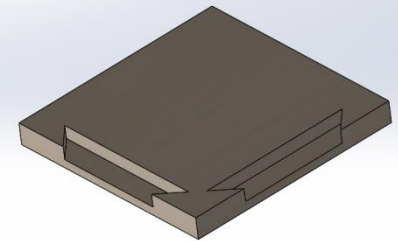
18 PIECES

TYPE 2



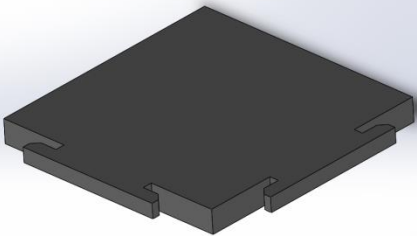
18 PIECES

TYPE 3



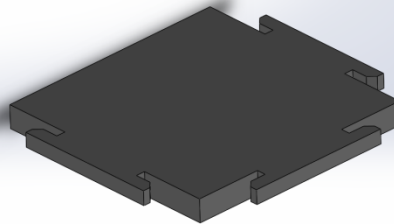
2 PIECES

TYPE 4



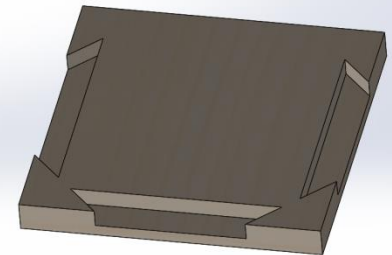
2 PIECES

TYPE 5



12 PIECES


TYPE 6



12 PIECES

2 - PRINTING

- You can print STL files one by one or use the STL ones which contain several pieces. If you choose the second option you have to print :

| | |
|--|---------|
|  Chess_pieces.stl | 2 times |
|  Tray_1_1.stl | 2 times |
|  Tray_1_2.stl | 2 times |
|  Tray_1_3.stl | 1 times |
|  Tray_1_4.stl | 1 times |
|  Tray_1_5.stl | 2 times |
|  Tray_1_6.stl | 2 times |

3 – BOARD ASSEMBLY

- Pieces position :

TOP VIEW

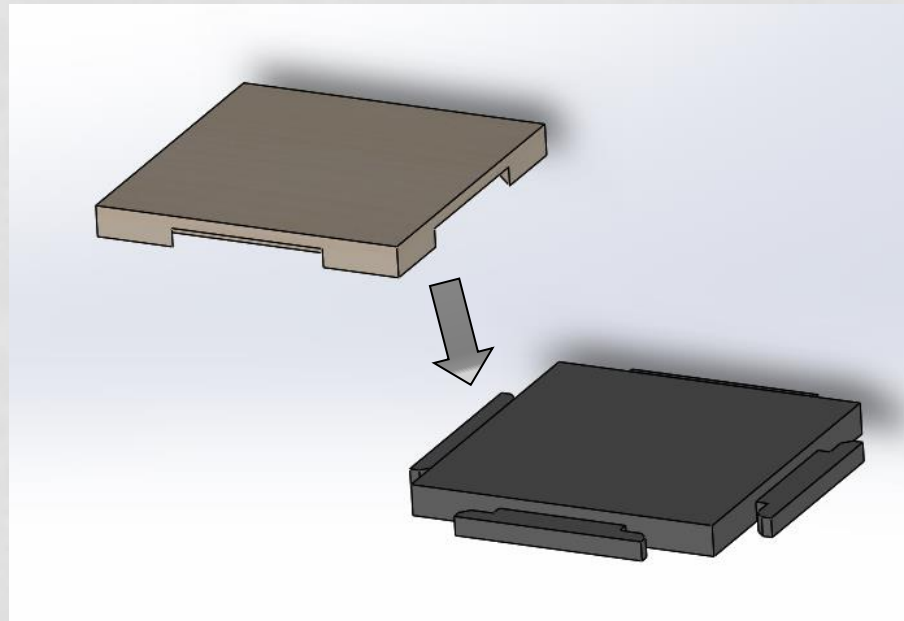
| | | | | | | | |
|---|---|---|---|---|---|---|---|
| 4 | 6 | 5 | 6 | 5 | 6 | 5 | 3 |
| 6 | 2 | 1 | 2 | 1 | 2 | 1 | 5 |
| 5 | 1 | 2 | 1 | 2 | 1 | 2 | 6 |
| 6 | 2 | 1 | 2 | 1 | 2 | 1 | 5 |
| 5 | 1 | 2 | 1 | 2 | 1 | 2 | 6 |
| 6 | 2 | 1 | 2 | 1 | 2 | 1 | 5 |
| 5 | 1 | 2 | 1 | 2 | 1 | 2 | 6 |
| 3 | 5 | 6 | 5 | 6 | 5 | 6 | 4 |

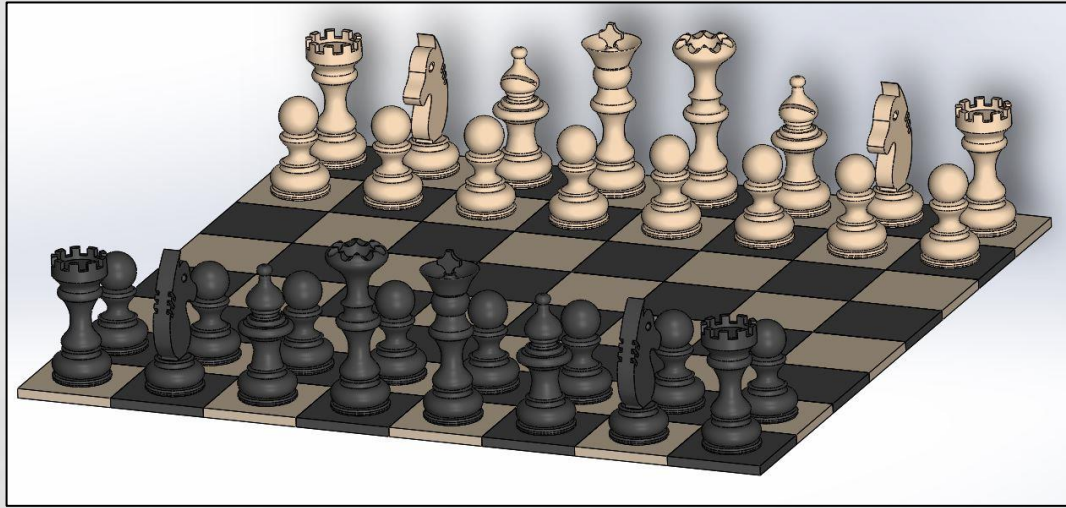
BOTTOM VIEW

| | | | | | | | |
|---|---|---|---|---|---|---|---|
| 3 | 5 | 6 | 5 | 6 | 5 | 6 | 4 |
| 5 | 1 | 2 | 1 | 2 | 1 | 2 | 6 |
| 6 | 2 | 1 | 2 | 1 | 2 | 1 | 5 |
| 5 | 1 | 2 | 1 | 2 | 1 | 2 | 6 |
| 6 | 2 | 1 | 2 | 1 | 2 | 1 | 5 |
| 5 | 1 | 2 | 1 | 2 | 1 | 2 | 6 |
| 6 | 2 | 1 | 2 | 1 | 2 | 1 | 5 |
| 4 | 6 | 5 | 6 | 5 | 6 | 5 | 3 |

3 – BOARD ASSEMBLY

- For the board assembly, you have only to fit together the pieces at the same position than on the diagram which is on the precedent sheet.
- If you want a stronger board, you can stick the pieces together





THE END